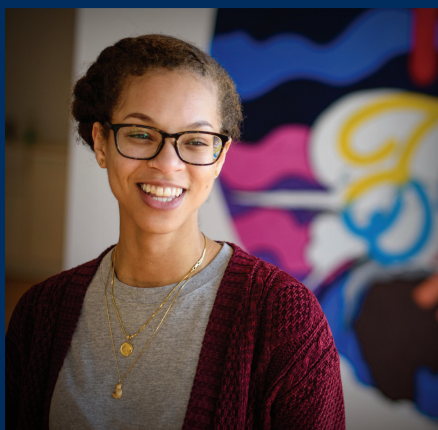


MSI Employment Report

Master of Science in Information

2020



Survey Outcomes

The University of Michigan School of Information (UMSI) Career Development Office surveys our graduates to identify their post-graduation plans and outcomes. This report summarizes UMSI first-destination outcomes from 2019 MSI graduates who completed the survey by the deadline or for whom a known outcome was reported in other ways. Of the MSI students who graduated in 2019, 82% responded to the survey or reported their outcome in other ways.

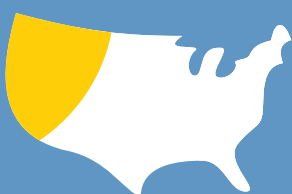
158

SURVEY RESPONSES/
KNOWN OUTCOMES OUT OF

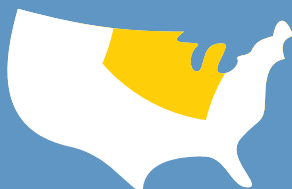
192

2019 GRADUATES

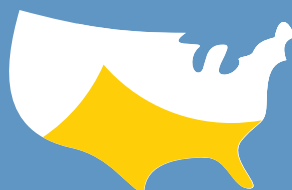
Where our graduates are working



West
40%



Midwest
39%



South
9%



Northeast
8%



International
3%

States employing the most grads



California
33%



Michigan
30%

Top industries our graduates are working in



Technology
40%



University/College
11%



Academic Library
10%



Manufacturing
6%



Financial Services
6%



Consulting
5%



Healthcare/
Health System
4%



Consumer Goods
& Services
3%



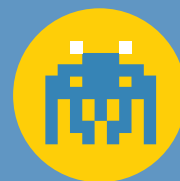
Start-up/
Entrepreneurial
3%



Corporate Library/
Archive
2%



Government
2%



Entertainment/
Gaming
2%



Nonprofit/NGO
2%



Marketing/
Design Agency
1%



Biotech/Pharma
1%

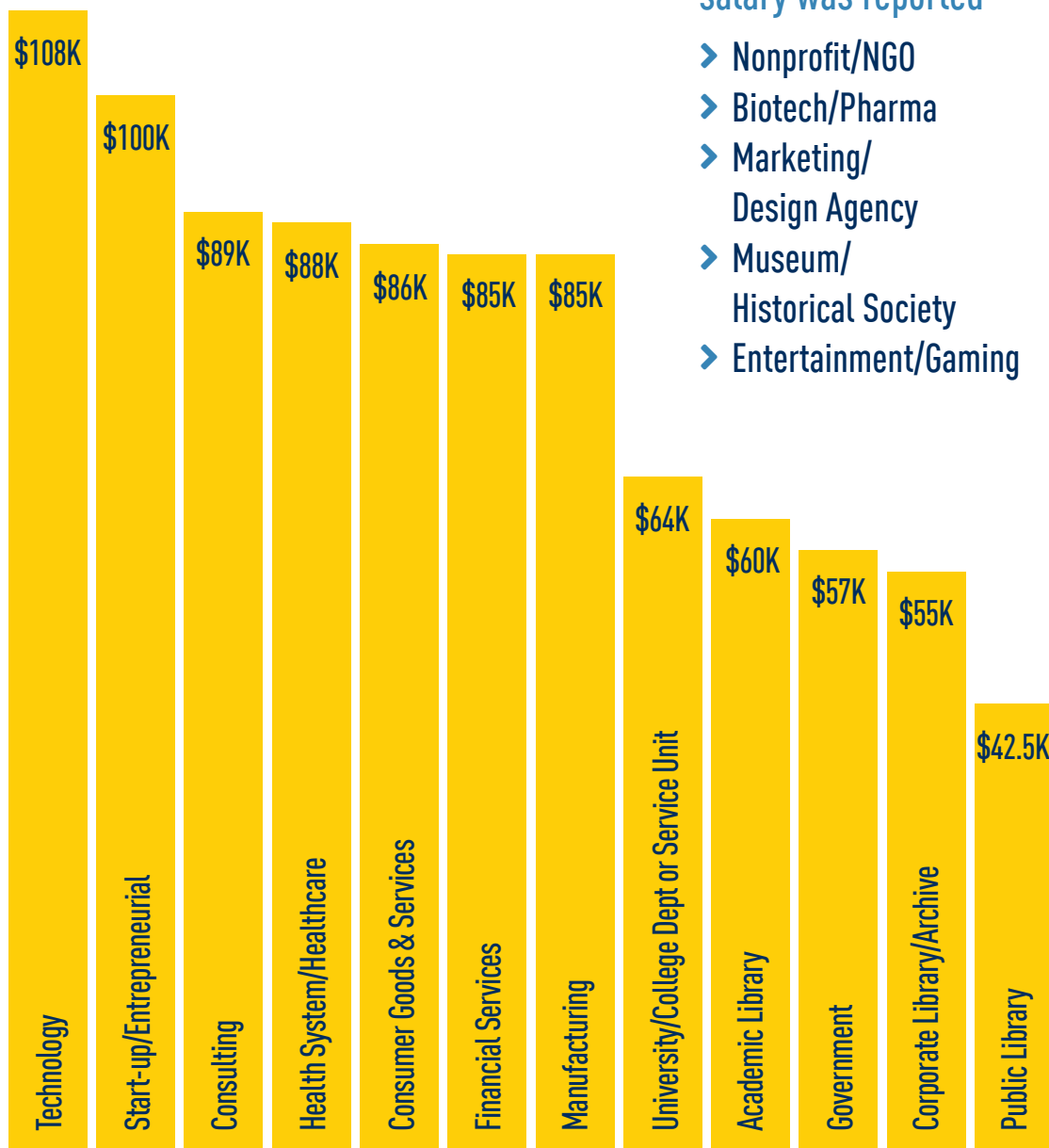


Public Library
1%



Museum/
Historical Society
1%

Salary by industry



Industries in which no salary was reported

- > Nonprofit/NGO
- > Biotech/Pharma
- > Marketing/Design Agency
- > Museum/Historical Society
- > Entertainment/Gaming

\$90K

Average Salary
OVERALL

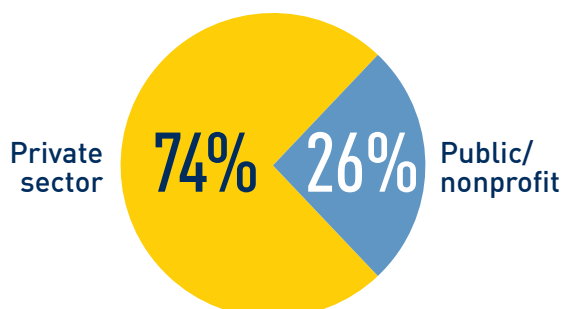
\$99K

Average Salary
PRIVATE SECTOR

\$60K

Average Salary
PUBLIC/NONPROFIT

Where are our graduates accepting jobs?



Signing bonus/Relocation package

\$12K

Average

Specific to tech
and private sector
outcomes

Our graduates say...

97%

Have high levels of
job satisfaction

Salaries by region & industry



Northeast

• Academic Library	\$66.0K
• Consulting	\$112.5K
• Health System/ Healthcare	\$90.0K
• Corporate Library/ Archive	\$58.0K
• Technology	\$112.5K
• University/College	\$67.5K



West

• Consulting	\$82.5K
• Financial Services	\$102.5K
• Health System/ Healthcare	\$102.5K
• Technology	\$117.0K
• Start-up/ Entrepreneurial	\$103.0K
• Biotech/Pharma	\$92.5K



Midwest

• Academic Library	\$56.0K
• Consulting	\$72.0K
• Financial Services	\$79.0K
• Consumer Goods & Services	\$92.5K
• Manufacturing	\$84.0K
• Public Library	\$42.5K
• Technology	\$84.0K
• University/College	\$63.0K



South

• Academic Library	\$60.0K
• Financial Services	\$85.0K
• Consumer Goods & Services	\$85.0K
• Government	\$57.0K
• Technology	\$98.0K

100%

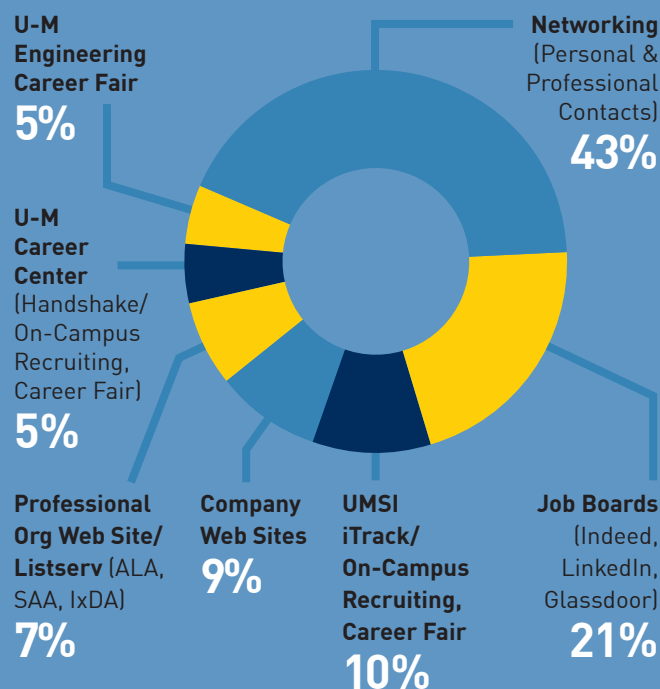
Working or continuing
education in field of choice



Most valuable co-curricular experiences

- Career advising / CDO activities
- Student org / professional development opportunities
- Research experience
- Design clinic
- Alternative spring break

Most effective job search methods



95%

of our graduates say...



2020 Job Outcomes

Academic Library/Archives

Research & Instruction Librarian	<i>Tufts University Hirsh Health Sciences Library</i>
Assistant Research Scholar for Digital Initiatives	<i>New York University Libraries</i>
knowledge management and digital asset librarian	<i>SUNY at Stony Brook</i>
Academic Specialist - Digital Archivist	<i>Michigan State University</i>
Assistant Professor Scholarly Communication and Copyright Librarian	<i>Kansas State University</i>
Adjunct Librarian	<i>Oakland Community College</i>
Digital & Scholarly Initiatives Librarian	<i>University of Michigan Law Library</i>
Research and Assessment Associate - Assistant Librarian	<i>University of Michigan Library</i>
User Services & First Year Experience Librarian	<i>University of Michigan-Dearborn</i>
Archives Assistant	<i>Bentley Historical Library</i>
Supplemental Librarian	<i>Northwestern Michigan College</i>
Student success librarian	<i>Augsburg University</i>
Metadata Remediation and Projects Intern	<i>University of Michigan Library</i>
Pauline A. Young Resident	<i>University of Delaware</i>
Data Management Consultant	<i>Johns Hopkins University</i>
NCSU Libraries Fellow	<i>North Carolina State University</i>

Design Agency

Data Scientist	<i>HKS</i>
Interaction Designer	<i>Internet Brands</i>

Biotech/Pharma

UX Designer	<i>Dexcom Inc.</i>
UX Designer & Developer	<i>Illumina</i>

Consulting

UX Consultant	<i>beBit</i>
UX Designer	<i>Deloitte Insight Studio</i>

Tech Advisory Consultant	<i>EY</i>
UX Designer	<i>Fresh Consulting</i>
UX/UI Designer	<i>Maestro</i>
Associate	<i>McKinsey & Co</i>
High Tech Anthropologist	<i>Menlo Innovations</i>
Associate Data Scientist	<i>Publicis.Sapient</i>

Entertainment/Gaming

Interaction Designer	<i>Netease Games</i>
Back-end Software Engineer	<i>Twitch Interactive</i>

Financial Services/Banking/Insurance

Data Scientist	<i>AAA- The Auto Club Group</i>
UX Designer	<i>Cascadia Capital</i>
Analytical Scientist	<i>Ford Credit</i>
Data Analyst	<i>Groundspeed Analytics</i>
UX Designer	<i>State Farm</i>
Product Designer	<i>Step</i>
UX Designer	<i>United Shore</i>
Product Designer	<i>Visa</i>

Government

Data Curation Specialist	<i>USAID</i>
Librarian (Digital Collections Specialist)	<i>Library of Congress</i>
Library Technician	<i>Library of Congress</i>

Consumer Goods & Services

UX Researcher	<i>CVS</i>
UX Designer	<i>Victoria's Secret</i>
UX Designer	<i>Walmart Inc.</i>
UX Designer	<i>Walmart Inc.</i>
UX Designer	<i>Walmart Inc.</i>
UX Designer	<i>Walmart Inc.</i>

Health System/Products/Services

Client Systems Administrator	<i>Epic Systems</i>
Data Engineer	<i>HealthCrowd</i>
Product Designer	<i>NowPow</i>
Clinical Quality Data Analyst	<i>Stony Brook Medicine</i>
Lead Programmer Analyst	<i>University of Michigan - Kidney Epidemiology and Cost Center</i>
UI Designer	<i>Wahoo Fitness</i>

Manufacturing

Program Management Office Analyst	<i>Amtcor Rigid Plastics</i>
AR/VR Engineer	<i>Applied Materials</i>
Data Scientist	<i>Arconic</i>
Product Designer	<i>Ford Motor Company</i>
Ford College Graduate - Global Data Insight & Analytics	<i>Ford Motor Company</i>
UX Designer	<i>Ford Motor Company</i>
Research Engineer	<i>Ford Motor Company</i>
Product Designer	<i>Ford Motor Company</i>
Business Analyst	<i>Ford Motor Company</i>
Ford College Graduate - Global Data Insight & Analytics	<i>Ford Motor Company</i>
Software Engineer	<i>Ford Motor Company</i>

Museum/Historical Society

Collections and Education Specialist	<i>Pavek Museum of Broadcasting</i>
--------------------------------------	-------------------------------------

Nonprofit/NGO

Product Designer	<i>Kai Ming Headstart</i>
Global Connectivity Specialist	<i>Mercy Corps</i>

Public Library

Youth and Teen Librarian	<i>Westland Public Library</i>
--------------------------	--------------------------------

Start-Up/Entrepreneurial

Software Engineer	<i>Bolt Financial Inc.</i>
Founder	<i>Dear Black Women</i>

Product Designer	<i>Fountain Inc</i>
User Experience Researcher	<i>Human Practice</i>

Corporate/Special Library

Technology and Innovation Manager	<i>Allied Media Projects</i>
Data Curator I	<i>Institute for Defense Analysis</i>
Resource Specialist	<i>Mintz</i>

Technology

UX Designer	<i>ADP</i>
Product Designer	<i>Affirm</i>
Product Designer	<i>Alation</i>
UX Designer	<i>Alibaba</i>
Cloud Analytics Engineer I	<i>Amazon Web Services</i>
Software Engineer	<i>Amazon Web Services</i>
Sr Program Manager	<i>Amazon Web Services</i>
Software Engineer	<i>Amazon Web Services</i>
AR and UX Designer	<i>AR Queue</i>
UX Designer	<i>Automation Anywhere</i>
UX Researcher	<i>Bluehost</i>
UX Researcher	<i>CARFAX</i>
UI/UX Designer	<i>Detroit Labs</i>
UX Designer	<i>DNAexus</i>
Product Designer	<i>DocuSign</i>
UX Designer	<i>EchoNous</i>
Product Designer	<i>Facebook</i>
Product Designer	<i>Facebook</i>
Product Designer	<i>Figure Eight</i>
User Experience Researcher	<i>Google</i>
Business Intelligence Analyst	<i>Groundspeed Analytics, Inc.</i>
Machine Learning Engineer	<i>Groundspeed Analytics, Inc.</i>

Data Analyst	<i>Groundspeed Analytics, Inc.</i>
Data Engineer	<i>Health Crowd</i>
User Researcher	<i>IBM</i>
Design Researcher	<i>IBM</i>
UX Researcher	<i>IBM</i>
Associate Product Designer	<i>Keap</i>
UX Designer I	<i>LLamasoft</i>
UX Designer	<i>Logic Solutions</i>
Product Design Lead	<i>Lyft</i>
UX Researcher	<i>Lyft</i>
UX Researcher	<i>Medallia</i>
UX Designer	<i>Microsoft</i>
Program Manager	<i>Microsoft</i>
UX Researcher	<i>Microsoft</i>
UX Designer	<i>MobileIron</i>
Software Engineer	<i>Opendoor</i>
User Experience Designer	<i>Oracle</i>
UX designer	<i>Oracle</i>
User Experience Designer	<i>Oracle</i>
Interaction Designer	<i>Oracle</i>
Product Designer	<i>Salesforce</i>
Sr Data Visualization Designer	<i>Salesforce</i>
UX Designer	<i>SAP</i>
User Experience Designer Specialist	<i>SAP</i>
UX Design Specialist	<i>SAP</i>
User Experience Design Specialist	<i>SAP</i>

Business Systems Analyst	<i>ServiceNow</i>
Senior Solutions Engineer	<i>SkySpecs</i>
Product Designer	<i>Sumo Logic</i>
UX Designer	<i>Syllable Corporation</i>
Software Engineer	<i>Twilio</i>
Risk Strategy Analyst II	<i>Uber</i>
UX Researcher	<i>Udemy</i>
UX Designer	<i>Veritas Technologies</i>
Product Designer	<i>Vmware</i>
Product Designer	<i>VMware</i>
Music Product Marketing	<i>Youtube</i>

University/College

Bioinformatician	<i>Stanford University School of Medicine</i>
Research Technician Lead	<i>University of Michigan (U-M) Biosocial Methods Collaborative</i>
Data Scientist	<i>U-M INFORMS</i>
Research Support Associate	<i>U-M Institute for Research on Innovation & Science</i>
Research Area Specialist Intermediate	<i>U-M Institute for Social Research</i>
Web Designer	<i>U-M Michigan Creative</i>
UX Designer	<i>U-M Office of Academic Innovation</i>
PhD Student	<i>U-M School of Information</i>
PhD Student	<i>U-M School of Information</i>
Content Specialist	<i>University of Michigan</i>
PhD Student	<i>University of Michigan</i>
Senior User Experience and Accessibility Strategist	<i>U-M College of Engineering</i>
Data Scientist	<i>U-M Center for Academic Innovation</i>
Database Analyst	<i>U-M Ford School of Public Policy</i>
Application Developer Intermediate	<i>U-M Information and Technology Services</i>
PhD Student	<i>University of Washington</i>
Assessment Program Manager	<i>Yale School of Medicine, Teaching and Learning Center</i>

Contact the UMSI Career Development Office to discuss your job search, or to receive information on hiring UMSI grads.
umsi.careers@umich.edu

